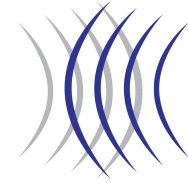


Over The Side Mount

Rugged and simple OTS Mount for Sonar Equipment



GeoAcoustics

OVERVIEW

The GeoAcoustics' OTS Mount has been in use for over 20 years and is a tried and tested design for mounting sonar equipment on various vessel types. It consists of four components which together form a reliable and stable mounting platform for a vast array of sonar equipment such as side scan and bathymetric, or sub-bottom profiler systems.

Although principally designed for operation with GeoAcoustics Ltd equipment, the OTS Mount can be modified for almost any third-party sensor using a simple custom adapter. The rugged design offers clear advantages over other systems employing work drives to raise and lower the pole. A range of GNSS position/heading sensors can be fitted to the top of the OTS Mount pole set.

System Components

In addition to the GNSS, the OTS Mount consists of 3 main parts – The boom mounting plate, which fixes to the vessel. The stabiliser, which provides additional support between the vessel, and the pole to which the sonar head is attached. The pole is made up of three interconnecting poles.

Boom Mounting Plate

This is installed flat to the deck of the vessel or alternatively to a rigid framework which can then be mounted on the deck and fixed securely. It is mounted at 90° to the keel or direction of travel of the vessel.

Stabiliser

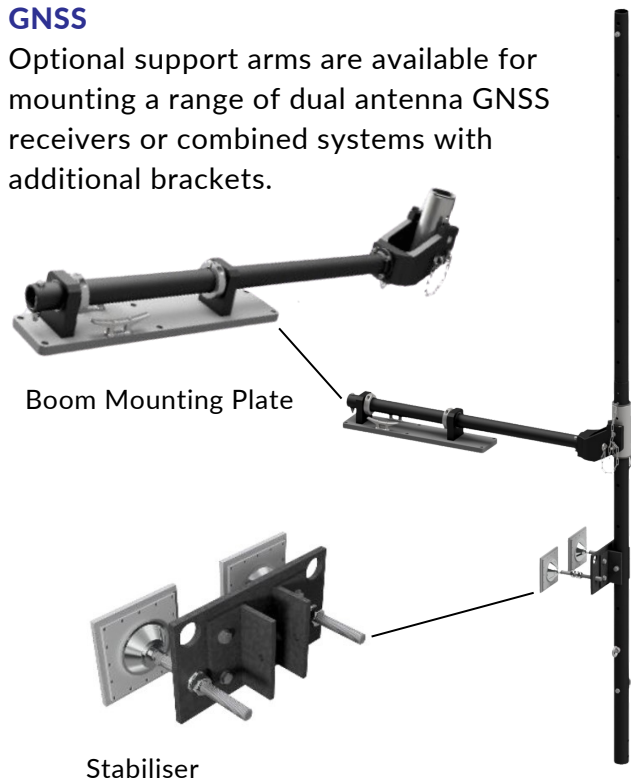
The stabiliser can be used to minimise the possibility of movement and vibration for precision, narrow beam or angle measurement-based systems such as GeoSwath.

The Pole

The pole is made up of three individual connecting poles which can be used as required to suit the shape and size of the vessel as well as any minimum submergence requirements of the sonar.

GNSS

Optional support arms are available for mounting a range of dual antenna GNSS receivers or combined systems with additional brackets.



GeoAcoustics

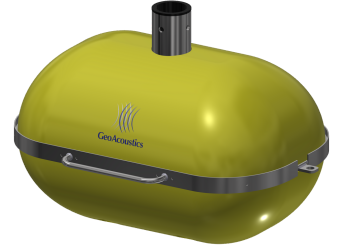
Standard Mounting for the Following Sonar Systems



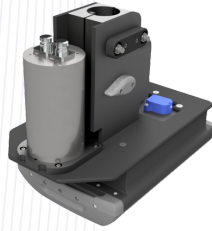
GeoPulse Compact



GeoSwath



GeoPulse



Kongsberg EM2040P



Kongsberg TOPAS PS120

OTS Mount

Boom mounting base plate	711 mm (L) x 152 mm (W)
Individual pole specifications	1829 mm (L), 70 mm (OD), 11 kg
Number of poles	3
Pole deployment length	One section: 1830 mm Two sections: 3600 mm Three sections: 5370 mm
Boom mounting plate weight (excluding shafts)	24 kg
Material	Aluminium
Surface finish	Hard coat anodised & Duplex seal
Optional transit case	Shaft: 1945 mm (L) x 400 mm (W) x 190 mm (H) Boom mount: 1520 mm (L) x 480 mm (W) x 375 mm (H)

Options

Hemisphere V113, V500 mounting bracket	GS03-0010
Applanix POS MV, Hemisphere VS1000 mounting bracket	POSMV-0006
Kongsberg Seapath 130 mounting bracket	GS02-0069
Kongsberg Seapath 330 mounting bracket	GS02-0071

Specifications subject to change without notice. E&OE

Over The Side Mount
Technical Specifications